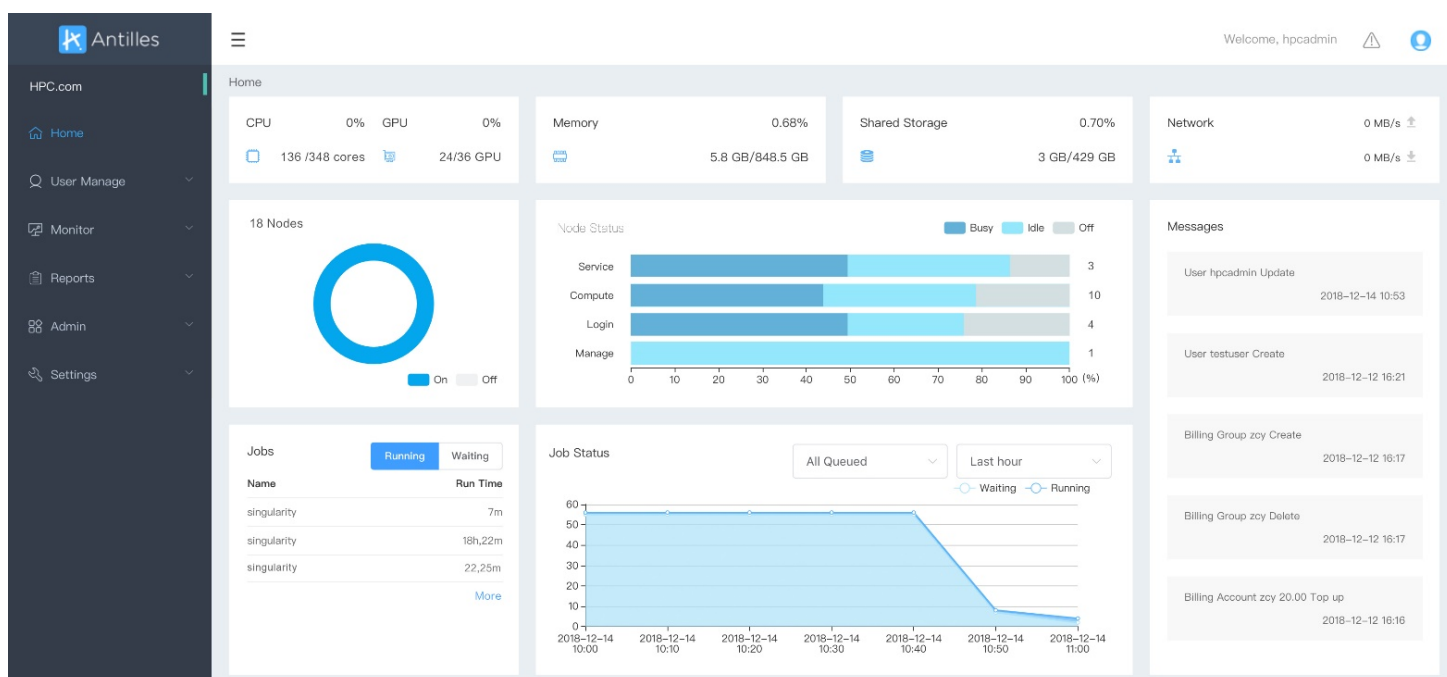


Antilles

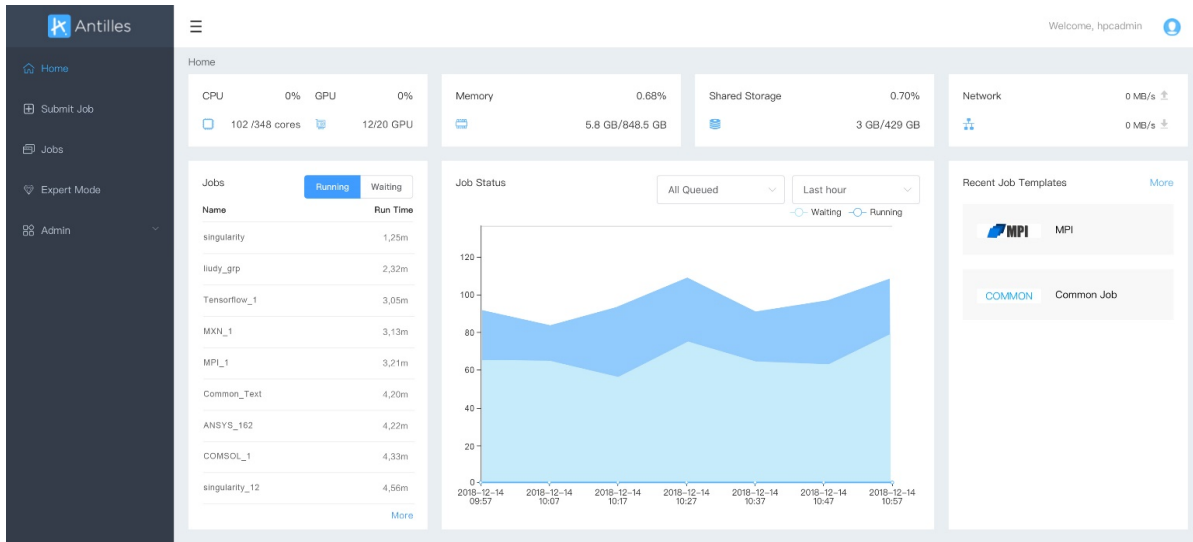
Antilles is an infrastructure management software for high-performance computing (HPC). It provides features like cluster management and monitoring, job scheduling and management, cluster user management, account management, and file system management.

With Antilles, administrators can manage and monitor user groups, users, and billing groups within a cluster in a centralized manner. They can also schedule and monitor jobs, alerts, and reports, and perform various settings.



With Antilles, users can centralize resource allocation in one supercomputing cluster and carry out HPC jobs. Users can perform operations by logging in to the management system interface with a browser, or by using command lines after logging in to a cluster login node with another Linux shell.

Antilles can be found on GITHUB under : <https://github.com/lenovo/Antilles>



Installation

CentOS / Red Hat Enterprise Linux (RHEL) 7.5 reference to [docs/Antilles_installation_guide_EL7.md](#)

SUSE Linux Enterprise server (SLES) 12 SP3 reference to [docs/Antilles_installation_guide_SLES.md](#)

Usage

Antilles Admin guide reference to [docs/Antilles_admin_guide.md](#)

Antilles User guide reference to [docs/Antilles_user_guide.md](#)

Contributors

- Sign out Individual/Non-Commercial Contributor License Agreement (CLA) if you will be contributing on behalf of yourself in individual capacity or on behalf of a non-commercial entity, e.g. a University or a non-profit organization. You can find the [CLA here](#).
- If you are contributing on behalf of your employer, other than a non-commercial entity, we'll need a signed copy of our Corporate Contributor License Agreement (CCLA). You can find the [CLA here](#).
- Fork the repo, make your changes, and open pull requests!

License

BSD-3 license for individual/non-commercial use and EPL-1.0 license for commercial use.